



# Clandon CofE Primary School

Newlands Federation - Roots to grow, wings to fly.

Newsletter 23<sup>rd</sup> February 2024

Dear Families

A rather wet and windy start to the new half term but it has been nice to see the sun today. We are thankful for the signs of spring starting to appear around us – daffodils, early blossom and birds singing very loudly.

## Changes to PE Days:

Class PE days are changing as shown below.

CLASS	NEW PE DAY from w/b 26 <sup>th</sup> February	<b>Children need to come to school dressed in their PE kit on their class PE day.</b> As usual, please ensure everything your child wears to school is named.
Rabbits, Badgers and Robins	Friday	
Squirrels	Monday	
	from w/b 5 <sup>th</sup> March	
Kestrels	Tuesday	

## Request from Squirrel Class:

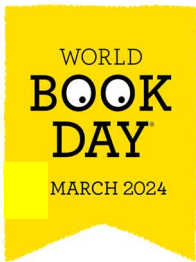
Squirrel Class would be very grateful for donations of newspaper and also plastic bottles 500ml/750ml size (for volcanoes!).

## Bookshelf Request for Library:

A couple of the bookshelves in the school library have been moved around just a bit too often and are now rather wobbly. If you are having a clear out at home and find you have a bookshelf that you no longer require we would love to give it a new home in the library.

## Bringing Special Items to School:

Please be aware that high value items or things you or your child would be sad to lose or get broken should not be brought to school. Sometimes your child may wish to bring in an item for show and tell or that's related to a topic they are learning about in school; these should always be handed to the class teacher for safekeeping and will be returned to you at the end of the day.



It's that time of year again where we think about how amazing books are and spend a day at school talking and learning all about our favourite books, authors and illustrators.

This year we're inviting children and staff to **dress up as a book character for World Book Day**. We will be holding our event on **Friday 8<sup>th</sup> March** due to Squirrel Class attending the Sportshall event on Thursday 7<sup>th</sup> March.

It doesn't need to be a huge, frilly costume, it could just be a t-shirt and jeans with a piece of yellow paper and you are transformed into Charlie Bucket with his golden ticket from 'Charlie and the Chocolate factory' by Roald Dahl!

Just adding a mask, or a prop or even making your hair look different can change you into a book character. You don't need to buy anything new - just use what you already have at home.

### Here are some ideas:



Greg- Diary of  
a Wimpy Kid



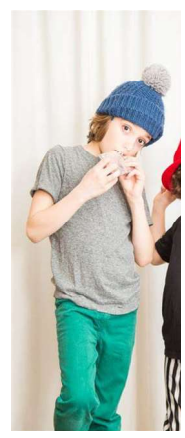
Matilda



Tin Tin



Pippi  
Longstocking



Charlie  
Bucket

### **Helping Children with Separation Anxiety and at School Drop-off:**

Attached with this newsletter are a couple of short, useful guides from Mindworks about separation anxiety, how you can help your child cope if they feel anxious leaving you and useful tips about how you can help your child come into school more easily.

### **Exciting Science Shows:**

Please see the flyer at the end of this newsletter for information about an exciting and educational show that promises to "amaze and astound all ages from 4 years upwards" coming to Guildford and Dorking during the Easter holidays.

### **Easter Holiday Football Camps:**

Information about two local football camps running this Easter holiday is at the end of this newsletter.

### **Fire Safety Visits:**

Year 5 and Year 2 had a visit from the Fire Service on Tuesday for some fire safety education sessions. Year 2 talked about: what firefighters do, what to do if you find a fire, calling 999, matches and lighters safety, what's 'safe for play' at home. Year 5 talked about: fire hazards at home, the importance of smoke alarms, fire escape plans, stop drop and roll. We are really grateful to the Surrey Fire and Rescue Service for organising and delivering these important sessions.

### **Developing Communication Skills:**



Would you rather live  
in a huge castle in the  
clouds or an  
enchanted forest?



If you are going to be out and about this weekend, don't forget that the A3 is closed between Wisley and Send from Friday night (23<sup>rd</sup> February) until the early hours of Monday morning (26<sup>th</sup> February). [Upcoming weekend closures on the A3 and M25 | Surrey Education Services \(surreycc.gov.uk\)](https://www.surreycc.gov.uk/news/upcoming-weekend-closures-on-the-a3-and-m25)

Warmest wishes from

**Vicky Voller, Headteacher & Stacey Reynolds, Head of School**  
**The Newlands Federation**

**Email Vicky:** [head@newlands.surrey.sch.uk](mailto:head@newlands.surrey.sch.uk)

**Email Stacey:** [sreynolds@clandon.surrey.sch.uk](mailto:sreynolds@clandon.surrey.sch.uk)

**Tel Clandon: 01483 222442 Tel Shere: 01483 202198**

**Active Hour mobile number: 07377 147643**

## Spring Term Dates

\*New dates added or updated event

February	Fri 2 <sup>nd</sup>	Whole School	NSPCC Number Day – Wear number theme and donate £1
	Wed 7 <sup>th</sup>	Woodlands Group A	Sportshall Event at Guildford Spectrum afternoon
	Thu 8 <sup>th</sup>	Year 5/6	Sportshall Event at Guildford Spectrum morning
	Thu 8 <sup>th</sup>	Woodlands Group C	Sportshall Event at Guildford Spectrum afternoon
	Fri 9 <sup>th</sup>	Whole School	PTFA Hot chocolate and doughnuts sale after school
	W/B 12 <sup>th</sup>	Whole School	Half Term
	Fri 23 <sup>rd</sup>	Year 5	Visit to Christ's College to watch performance of 'West Side Story'
	Wed 28 <sup>th</sup>	Whole School	Parent Teacher meetings 1.00-6.00pm

March	Fri 1 <sup>st</sup>	Whole School	PTFA Kestrels Cake Sale after school
	Wed 6 <sup>th</sup>	Woodlands Group B	Sportshall Event at Guildford Spectrum afternoon
	Thu 7 <sup>th</sup>	Squirrels	Sportshall Event at Guildford Spectrum morning
	Fri 8 <sup>th</sup>	Whole School	World Book Day Dress-up as Book Characters
	Wed 13 <sup>th</sup>	Woodlands	Visit to Wisley Garden
	Wed 20 <sup>th</sup>	Squirrels and Kestrels	Visit to the Natural History Museum
	Thu 21 <sup>st</sup>	Whole School	Easter Service at church (families welcome)
	Fri 22 <sup>nd</sup>	Whole School	Easter Pause Day
	Thu 28 <sup>th</sup>	Whole School	Last day of term – school finishes at 1.30pm

April	Mon 15 <sup>th</sup>	Whole School	Back to school for the first day of summer term
	Tue 30 <sup>th</sup>	Key Stage 2	Primary Music Festival at Dorking Halls (afternoon/evening)

May	Mon 6 <sup>th</sup>	Whole School	Bank Holiday – school closed
	W/B 13 <sup>th</sup>	Year 6	SATs
	Wed 22 <sup>nd</sup> - Fri 24 <sup>th</sup>	Kestrels	Residential at Bentley Copse
	W/B 27 <sup>th</sup>	Whole School	Half Term

June	Fri 28 <sup>th</sup>	Whole School	INSET – no school for children due to teacher training

July	Mon 1 <sup>st</sup>	Whole School	INSET – no school for children due to teacher training
	Tue 2 <sup>nd</sup>	Whole School	Surrey Secondary Transition Day TBC
	Tue 23 <sup>rd</sup>	Whole School	Last day of term – school finishes at 1.30pm



WHO SAYS **SCIENCE** HAS TO BE BORING

# EXCITING SCIENCE

PREPARE TO BE AMAZED

★★★★★ "Superb!" ★★★★★ "Awesome!"

★★★★★ "Amazing Family Entertainment!"

WWW.EXCITINGSCIENCE.UK

**EXCITING SCIENCE**  
PREPARE TO BE AMAZED

**APRIL 2024**

Mon 01	Yvonne Arnaud, GUILDFORD	01483 440 000
Tue 02	Assembly Hall, TUNBRIDGE WELLS	01892 530 613
Wed 03	Dorking Halls, DORKING	01306 881 717
Thu 04	Arts Centre, HAVERHILL	01440 714 140
Sat 06	Civic Theatre, ROTHERHAM	01709 823 621
Sun 07	Forum Theatre, BILLINGHAM	01642 552 663
Mon 08	The Queens Hall, HEXHAM	01434 652 477
Tue 09	Beacon Arts Centre, GREENOCK	01475 723 723
Sat 13	Grove Theatre, DUNSTABLE	01582 602 080
Sun 21	Lowther Pavilion, LYTHAM ST ANNES	01253 794 221

**MAY 2024**

Mon 27	Watersmeet, RICKMANSWORTH	01923 711 063
Tue 28	Chequer Mead, EAST GRINSTEAD	01342 302 000
Thu 30	Royal Hippodrome, EASTBOURNE	01323 802 020

**JUNE 2024**

Sat 1	Ashcroft Theatre, CROYDON	0300 500 0595
-------	---------------------------	---------------

**10% SIBLING DISCOUNT**  
USE CODE: SIBLING24  
\*\*TERMS APPLY\*\*

**15% OFF**  
EARLY BIRD DISCOUNT  
EXPIRES 31 MARCH  
USE CODE: PEAS1524

**PLANET SOCCER**  
EST. 1999

## Easter Football Camp

**Week 1 - Tuesday 2nd - Friday 5th April**

**BOXGROVE PRIMARY SCHOOL** Boxgrove Lane, Guildford, Surrey GU1 2TD  
**TILLINGBOURNE JUNIOR SCHOOL** New Rd, Chilworth, Guildford, Surrey GU4 8NB  
**BUSBRIDGE JUNIOR SCHOOL** Brighton Road, Godalming, Surrey GU7 1XA

**£30 per day or £110 for all 4 days**

**Week 2 - Monday 8th - Friday 12th April**

**BOXGROVE PRIMARY SCHOOL** Boxgrove Lane, Guildford, Surrey GU1 2TD  
**PARK MEAD PRIMARY SCHOOL** Park Drive, Cranleigh, Surrey GU6 7HB

**£30 per day or £125 for all 5 days**

**All schools - Age 5-11 (School Years 1-6)**  
 Drop off times both weeks: 8:30am-9:30am, Pick up 3:30pm-4:30pm  
 \*\*code can be redeemed for any sibling bookings only

To book and for more information please visit the web address below or scan the QR Code.  
<http://planet-soccer.info/book-a-holiday-course/>

**01483 363190**  
**07912 553896**

Email: [admin@planet-soccer.info](mailto:admin@planet-soccer.info)  
[www.planet-soccer.info](http://www.planet-soccer.info)

Planet Soccer PlanetSoccerSP7 planetsoccerSP7

Est. **R.W.I.** 2021  
FOOTBALL COACHING

**HOE BRIDGE CAMPS**

## FOOTBALL CAMP

April 11 & 12  
Year 2 to 8

**BOOK NOW!**

[www.hoebridgescamps.co.uk](http://www.hoebridgescamps.co.uk)