



## Dear Families

We have all enjoyed the wonderfully creative entries to the Art Competition. The children have found so many different ways to interpret the theme of trees, from drawings and painting to collage and sculpture and even a biscuit tree! Thank you children for your fabulous entries and thank you to parents who were able to visit to see the artwork exhibited in the hall on Wednesday; we hope you enjoyed it.



Mrs McGowan will be displaying some of the exhibits in the school office so we will all be able to continue to enjoy the children's creativity.

## Wilderness Tree Surgery:

Following our recent tree survey, there are a few trees at the Wilderness that need some work. With school budgets across the country in a critical state we are keen to find the most cost-effective, pragmatic solutions to every problem. Please contact Mrs Voller by email to [head@newlands.surrey.sch.uk](mailto:head@newlands.surrey.sch.uk) if you know a kind-hearted, qualified tree surgeon who could help us out.

### School Uniform BLACK FRIDAY PROMOTION:

Brigade, the Clandon school uniform supplier, is running a Black Friday promotion this weekend:

- **10% Discount** for parents via Brigade's online services
- From **Friday 24<sup>th</sup> to midnight Monday 27<sup>th</sup> November**
- To receive the discount you need to enter promo code **BLACK10** during checkout (orders won't be discounted if you don't enter this code)

Use this link to access the promotion: <https://mailchi.mp/brigade/blackfriday23>

For any parents not able to take advantage of this offer but wanting to know about future offers, Brigade asks you to register your details via: <http://eepurl.com/Wlbln>

### Christmas Fair:

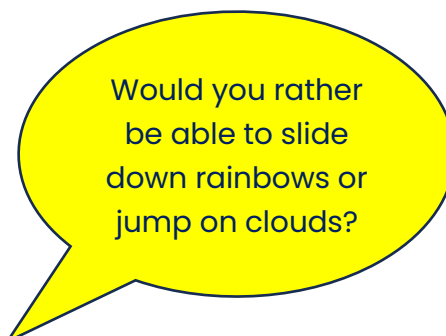
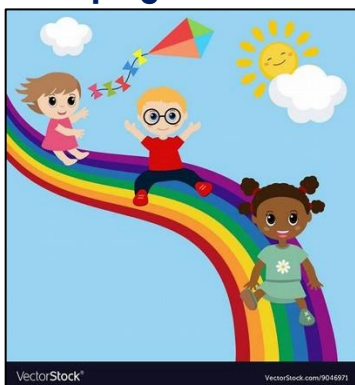
We are looking forward to seeing lots of families at the Christmas Fair next Friday, 1<sup>st</sup> December from 3.00–4.30pm. **Please note the earlier finish time on this day to get the festivities underway.**



### And another Christmassy Activity...



### Developing Communication Skills:



## Supported Lodgings and Fostering:

We have received information from Surrey County Council about opportunities to foster or provide Supported Lodgings which may be of interest:

### Surrey County Council encourages residents to offer Supported Lodgings/Foster

Supported Lodgings and Fostering are both incredibly rewarding experiences that can transform the lives of both the children/young people being supported and the carers' themselves. Children and young people who enter the care system have often experienced trauma and instability in their lives and a stable and supportive carer family can make a significant difference in their wellbeing and development.

Nationally, there are currently over 70,000 children living with carer families in the UK. However, there is still a significant shortage of Supported Lodgings and foster carers, with around 9,265 new carer families needed in the next year alone. In Surrey, there are over 1,000 children in care and Surrey County Council have just under 400 carer families.

Supported Lodgings is targeted at young adults aged 16-21 to help them build their independence skills ready to live independently in the future, from the security of a caring, stable home environment.

Supported Lodgings Carers and Foster carers come from all walks of life and backgrounds and there is no one-size-fits-all approach to caring. Whether you are single or married, young or old, own your own home or rent, you can still become a carer. The most important thing is a willingness to provide a safe and loving home for a child in need.

This is the message that Surrey County Council is promoting in national recruitment film 'Any of Us'. The short film has been jointly funded by over 80 councils across England and aims to raise awareness about fostering, particularly among those people who may not have previously considered themselves suited to caring for vulnerable children and young people. The film looks at the potential

of three people from different backgrounds to become carers and the potential of children they care for to grow and thrive.

If you have ever thought about fostering or offering Supported Lodgings, now is the time to take that first step and find out more. The more people who consider caring, the greater the chance of finding loving, stable homes for children in Surrey who desperately need them.

You can contact Surrey County Council Fostering Service on 0300 123 1620 (this is the General Fostering Duty telephone, please ask for the Supported Lodgings worker, when connected), via email at [supportedlodgings@surreycc.gov.uk](mailto:supportedlodgings@surreycc.gov.uk) or by visiting the website; [www.surreycc.gov.uk/fostering](http://www.surreycc.gov.uk/fostering)

You can watch 'Any of Us' via [Any of Us - YouTube](#) and connect with the Fostering Service on social media via [@surreyfostering](#).





## Measles:



The poster features a red background with white and yellow text. At the top left is the 'European Immunization Week' logo. The NHS logo is at the top right. The word 'MEASLES' is written in large, bold, white letters. Below it, in a yellow banner, is the text 'Don't let your child catch it - get them vaccinated with the MMR vaccine'. To the right, in white text, is a paragraph: 'The number of young people catching measles has risen. It's never too late to be vaccinated. You need two doses of MMR one month apart to be fully protected against measles, mumps and rubella. It's time to make measles a disease of the past. If you have symptoms of measles, stay at home and phone your GP or NHS 111 for advice. STAY AWAY from GP surgeries and A&E departments - you could spread the illness to others.' At the bottom left, in small white text, are the measles symptoms: 'Measles symptoms include: high fever; sore, red, watery eyes; coughing; aching and feeling generally unwell; a blotchy red brown rash, which usually appears after the initial symptoms.' At the bottom, there is a red banner with the 'i mmunisation' logo and the text 'the safest way to protect your child'. To the right of this banner, in small white text, is 'For more information contact your local GP surgery or visit: [www.nhs.uk/mmr](http://www.nhs.uk/mmr)'.

This week's schools bulletin from Surrey County Council advises education settings about the UK Health Security Agency's recently published measles risk assessment. This indicates that, although the risk of a UK-wide measles epidemic is considered low, a measles outbreak of between 40,000 and 160,000 cases could occur in London and outside of London there is a high risk of cases linked to overseas travel leading to outbreaks in specific groups. There has been a steady rise in measles cases this year.

The Measles, Mumps and Rubella vaccine is an effective way to protect children from this disease which, in some cases, can lead to serious illness.

For more information about measles and the MMR vaccine please visit: [Measles: information for schools and healthcare centres - GOV.UK \(www.gov.uk\)](#)



We held our Reindeer Run assembly on Thursday during which the children watched a video of the vital work that Phyllis Tuckwell Hospice Care do and how we can support them by raising sponsorship money for our event on Friday 8<sup>th</sup> December.

Our school community raised an **incredible £895.50** during our Sports for Schools **Athlete Event** last half-term. We know household budgets are increasingly tight and many people don't have much to spare right now, but look at what it can add up to when everyone contributes a little! P.S. We are in communication with Sports for Schools about the wristbands and posters that the children should be receiving soon 😊.

Warmest wishes from

**Vicky Voller, Headteacher & Stacey Reynolds, Head of School**

**The Newlands Federation**

**Email Vicky:** [head@newlands.surrey.sch.uk](mailto:head@newlands.surrey.sch.uk)

**Email Stacey:** [sreynolds@cclandon.surrey.sch.uk](mailto:sreynolds@cclandon.surrey.sch.uk)

**Tel Clandon:** 01483 222442

**Tel Shere:** 01483 202198

**Active Hour mobile number: 07377 147643**

## Autumn Term Dates

\*New dates added or updated event

November	Fri 3 <sup>rd</sup>	Whole School	PTFA Hot Chocolate Sale after school
	Fri 3 <sup>rd</sup>	Year 6	Friendship Workshop with Matrix Trust
	Sat 4 <sup>th</sup>	Parents	Forest School Working Party 10am-12pm
	Tue 7 <sup>th</sup>	Whole School	Individual Photographs
	Wed 8 <sup>th</sup>	Parents	Parent Teacher Meetings 1-6pm
	Fri 10 <sup>th</sup>	Whole School	Remembrance Visit to Memorial at the Church
	Sat 11 <sup>th</sup>	Families	Forest School Open Morning 10am-12pm
	Fri 17 <sup>th</sup>	Whole School	PTFA Mufti Day - donate a bottle for the Christmas Fair
	Wed 29 <sup>th</sup>	Whole School	Visit from Christ's College Choir
	Wed 29 <sup>th</sup>	Kestrels	Movie Night 5-7pm

December	Fri 1 <sup>st</sup>	Whole School	PTFA Christmas Fair after school
	Wed 6 <sup>th</sup>	Key Stage 2	Carols in the Wilderness at 2.30pm
	Fri 8 <sup>th</sup>	Whole School	Christmas Jumper Day and Christmas Lunch
	Fri 8 <sup>th</sup>	Whole School	Reindeer Run
	Tue 12 <sup>th</sup>	Whole School	Visit to Pantomime at Yvonne Arnaud Theatre 4pm finish
	Wed 13 <sup>th</sup>	Woodlands	Nativity at 9.30am
	Fri 15 <sup>th</sup>	Whole School	Last Day of Term, school finishes at 1.30pm

[illegible][illegible]